



W  
E  
L  
C  
O  
M  
E



**HOME**  
OF SOMERSET COUNTY, INC.

ANNUAL REPORT  
**2025**



# Empowering

at-risk families to achieve and maintain independence through strength-based case management services.

**90%** of families are maintaining independence after 5 years.



# From the Executive Director

I am inspired by the resilience, generosity, and shared purpose that carried HOME of Somerset County through another year of meaningful growth. This was a year defined not only by the services we delivered, but by the deepened partnerships, expanded resources, and renewed commitment to ensuring every neighbor has a safe, stable place to call home.

Our team worked tirelessly to meet rising community needs with compassion and professionalism. We strengthened our housing stabilization programs, expanded access, and secured funding that allows us to serve families with greater depth and continuity. We also laid the groundwork for an exciting office move—an important step toward creating a more accessible, welcoming, and functional space for both clients and staff.

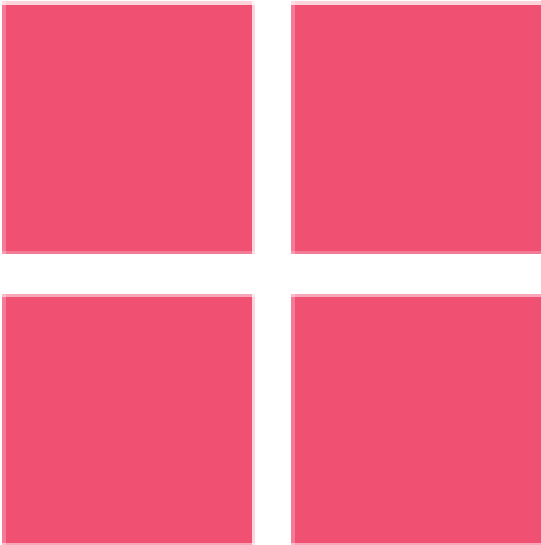
None of this progress happens in isolation. It is the result of dedicated staff who show up every day with empathy and expertise; board members who provide steady leadership and strategic vision; volunteers who give their time with open hearts; and donors and community partners who believe in our mission and invest in our work.

And to our clients — thank you. Your courage, determination, and trust inspire everything we do. You allow us into some of the most vulnerable moments of your lives, and your strength reminds us why this work matters. Your stories of perseverance guide our programs, shape our advocacy, and fuel our commitment to building a community where everyone has the opportunity to thrive.

As we look ahead, we remain grounded in the values that have guided HOME for more than three decades: compassion, accountability, and the unwavering belief that housing is the foundation from which people can build stability and hope. With your continued support, we will keep expanding our impact and strengthening the safety net our community deserves.

Thank you for standing with us, believing in our mission, and helping us build a Somerset County where everyone feels safe, supported, and home.

With much gratitude,  
Alyssa Martini  
Executive Director





## 2025 Board of Trustees

**Dottie Driscoll**  
*President*

**Jeff Knouse**  
*Vice President*

**Breda Ryan-Blake**  
**Tim O'Connor**  
*Co-Treasurers*

**Debbie Elefant**  
*Secretary*

**Serena Collado**  
**Doug Dzwonczyk**  
**Carol Levine**  
**Neil Mahoney**  
**Lee Matyola**  
**Sharon Rooney Mayer**  
**Kathy Rue**  
**Robin Osman**  
**Kate Sarles**

# Message From the Board of Trustees

## How Do You Define Success?

Success looks different for each of us. A diploma. A new job. Winning the big game.

For many of the families we serve, success is found in what others might see as the simplest achievements: getting dinner on the table after a long workday, paying the car repair bill, or scraping together enough for a security deposit.

At HOME, we measure success by the milestones our clients reach. A better-paying job. A child's graduation. A safe place to lay their head at night.

In 2025, we celebrated many such victories. Three families from our emergency shelter program secured permanent, affordable housing. Another family—after the mother found full-time employment—moved into Sunrise House, our transitional home where families begin contributing toward their living expenses as they rebuild stability.

The successes continued. A single mother earned her associate degree. A single father moved from chronic homelessness into supportive housing.

The growth of our HOME community is another powerful sign of success. In 2025, nearly 1,500 individuals volunteered—hosting families in our Emergency Shelter program, preparing meals and organizing drives. Each act of kindness strengthens the foundation our families stand on.

We also measure success by the dedication of our donors. Our \$750,000 capital campaign to purchase our own HOMEBase in Somerville is steadily advancing. Generous major gifts have brought us to more than 77% of our goal.

Perhaps most remarkable of all: 90% of families who complete our program are still living independently five years later. That lasting stability speaks to the extraordinary perseverance of our clients and the one-on-one support provided by our dedicated staff, the individuals who bring energy, compassion and a steady commitment to HOME each day.

Yes, there is still more to do. We need more hands-on volunteers, more congregations to host emergency shelter families, more meals for Food Security Friday, more voices sharing our mission on social media—and more financial support to sustain our programs and renovate our new HOMEBase.

I invite you to help us shape HOME's success story. Together, we can deepen our community and ensure that more families achieve lasting stability.

Thank you for all you do for HOME.

Dorothy Driscoll  
*President, Board of Trustees*





In 2025,  
 you responded to the needs of 49  
 families in our emergency shelter  
 and continuum of care programs.

# Our Volunteer Impact

### Shelter

- 12 Host congregations
- 25 Support congregations

### Resources

- 1,450 Nights of shelter
- 11,700+ Meals

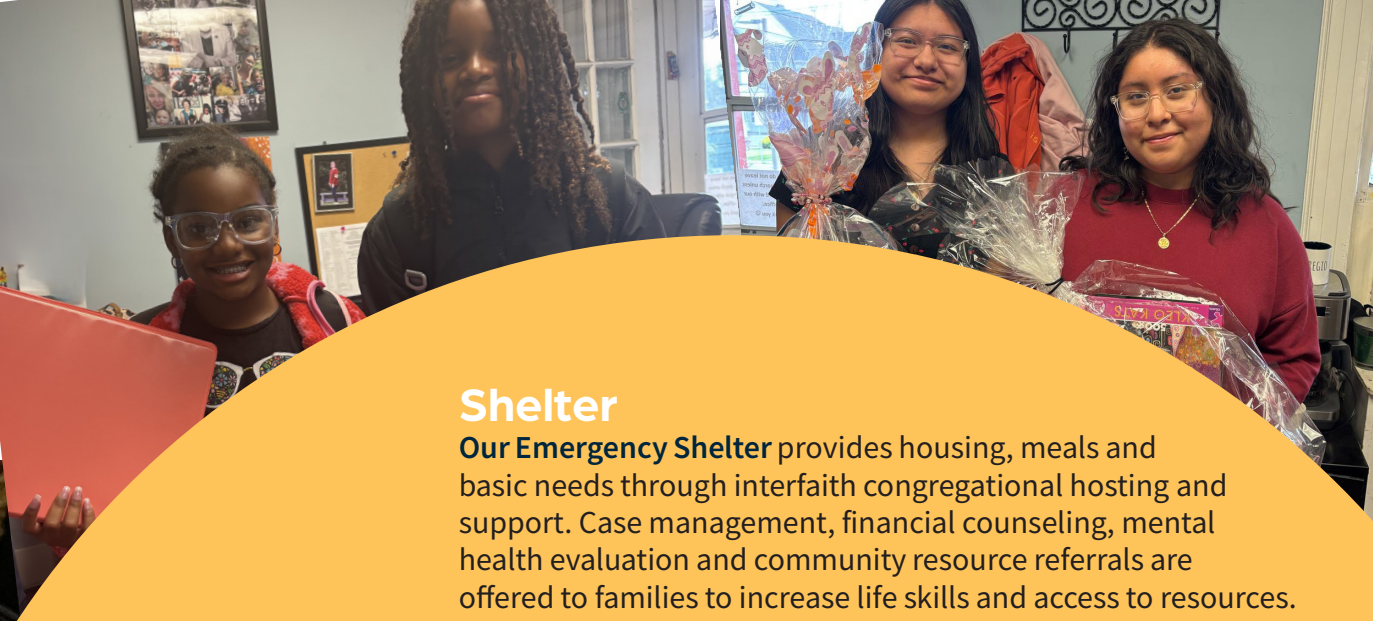
### Time

- 4,000+ Volunteer hours
- Over 1,480 volunteers

### Community Outreach

- Food security assistance
- Basic needs support
- Housing supplies
- Clothing and furniture
- Transportation assistance
- Tutoring services
- Back-to-school supplies
- Holiday support





## Shelter

**Our Emergency Shelter** provides housing, meals and basic needs through interfaith congregational hosting and support. Case management, financial counseling, mental health evaluation and community resource referrals are offered to families to increase life skills and access to resources.

- 5 Families served
- 6 Adults, 8 children
- 3 Families transitioned into independent housing
- 1 Family transitioned to Sunrise Transitional House
- 1,662 Hours of case management



# Our Continuum of Care Empowers

## Transitional Housing

**Sunrise House**, located in Bridgewater, accommodates families who were previously in our Emergency Shelter and have prepared themselves for independence but find themselves stalled by the search for permanent, affordable housing. Individualized case plans are created, basic needs are supplemented and residents pay a subsidized rent as they work on educational and employment goals.

- 2 Families served
- 2 Adults, 2 children
- 277 Hours of case management





# Supportive Services

**Phase 2** offers 18 months of continuing case management and support to clients who have transitioned to independent housing. This fills an identified gap in services to support newly housed families and prevent relapse back into homelessness.

- 12 Families served
- 18 Adults, 17 children
- 831 Hours of case management

**Sound Minds** provides all clients, children and adults, with a psychiatric evaluation, mental health counseling and crisis intervention. Our counselor provides direct services to clients at our host congregations, as well as in-home counseling. All adults and children have access to mental health services and participate in consistent counseling. Eight families participated in family therapy.

**Neighbors In Need** provides families living independently with case management and financial counseling resources that are aimed at housing and family stability. Mental health services, basic needs and food security supplementation help these families remain independent.

- 21 Families served
- 23 Adults, 21 children
- High focus on food security and increasing stable housing
- 1006 Hours of case management

**Bound Brook Families For Success** provides bilingual case management to the immigrant population of Bound Brook. Collaboration between Bound Brook Presbyterian Church, Middle Earth and HOME connects families with services and resources to help eliminate barriers in the community that lead to sustainable independence.

- 12 Families served
- 17 Adults, 12 children
- Strong focus on basic needs and employment connection
- 1040 Hours of case management



# PROJECT **HOMEBase**

## Building the Next Chapter

In 2025, Project HOMEBase advanced from concept to concrete action, marking one of the most meaningful steps forward in our organization's recent history. Throughout the year, we worked closely with our advisors and community partners to shape the vision for a permanent, purpose-built Welcome Center that reflects dignity, accessibility, and trauma-informed design. This foundational planning work positions HOME for deeper impact, expanded capacity, and a stronger, more stable pathway for the families we serve. Project HOMEBase is more than a building—it represents the next chapter of growth, stability, and mission-driven service. Our ongoing Capital Campaign is underway—please join us in bringing the new Welcome Center to life.



# Clients Who Inspire

## Back to School, Forward in Life: Ariel's Journey

Choosing to go back to school was an important step for me, and the best decision I have made in a long time. However, it also came with challenges. Balancing classes, responsibilities, my health and long days can be exhausting at times. The support I've received from HOME has made a meaningful difference in helping me stay focused on my goals. Knowing that there are people right beside me who believe in my decision to continue my education has given me the motivation to keep pushing forward.

HOME has supported me in many ways along this journey. They have helped provide food and even prepared meals for those long, tiring days when I needed it most or just didn't have it. They also made sure I had the school supplies I needed, including a backpack, pens, pencils, notebooks and everything else so I could start my classes prepared.

Beyond the physical support, HOME has also been there with encouragement and moral support, reminding me that I'm not alone in this process. They remind me that I have made the right decision and not to give up no matter how hard it may get. They encourage me to just keep going. Those words mean everything and truly do make a difference. Those words keep me going because I have many people that I want to make proud. Their kindness and generosity have helped lighten the load and allowed me to stay committed to finishing my education.



We hosted a successful Gala benefiting Project HOMEBase, bringing our community together to support the creation of a permanent, dignified space for families seeking stability. Honorees included: Liquid Church, LaFontaine & Budd Inc., Kathy Rue and Church of the Immaculate Conception.



# A Community

# That Cares



HOME was proud to be a beneficiary of the Hunterdon Polo Classic in Pittstown, NJ. Not even the rain could dampen the energy or generosity of the day, and the event brought wonderful visibility and support to our mission.



HOME was honored to receive the Somerset County Business Partnership's 2025 Non-Profit of the Year Award, a recognition that reflects the dedication of our staff, volunteers, partners, and supporters.



The Princeton Brass Band held a generous benefit concert at Middlebush Reformed Church to support Project HOMEBase, offering a beautiful performance that helped advance this important initiative.





Liquid Church hosted us for a holiday family day, complete with personalized gifts for both parents and kids, a delicious Thanksgiving meal and fun activities.



With the help of our dedicated network, we delivered holiday support that honored each family's dignity and brought comfort during a time that can be especially difficult.



The strong community spirit of Mannion's Pub & Restaurant was shown through a fundraising night in support of HOME with portion of all sales donated directly to our programs.

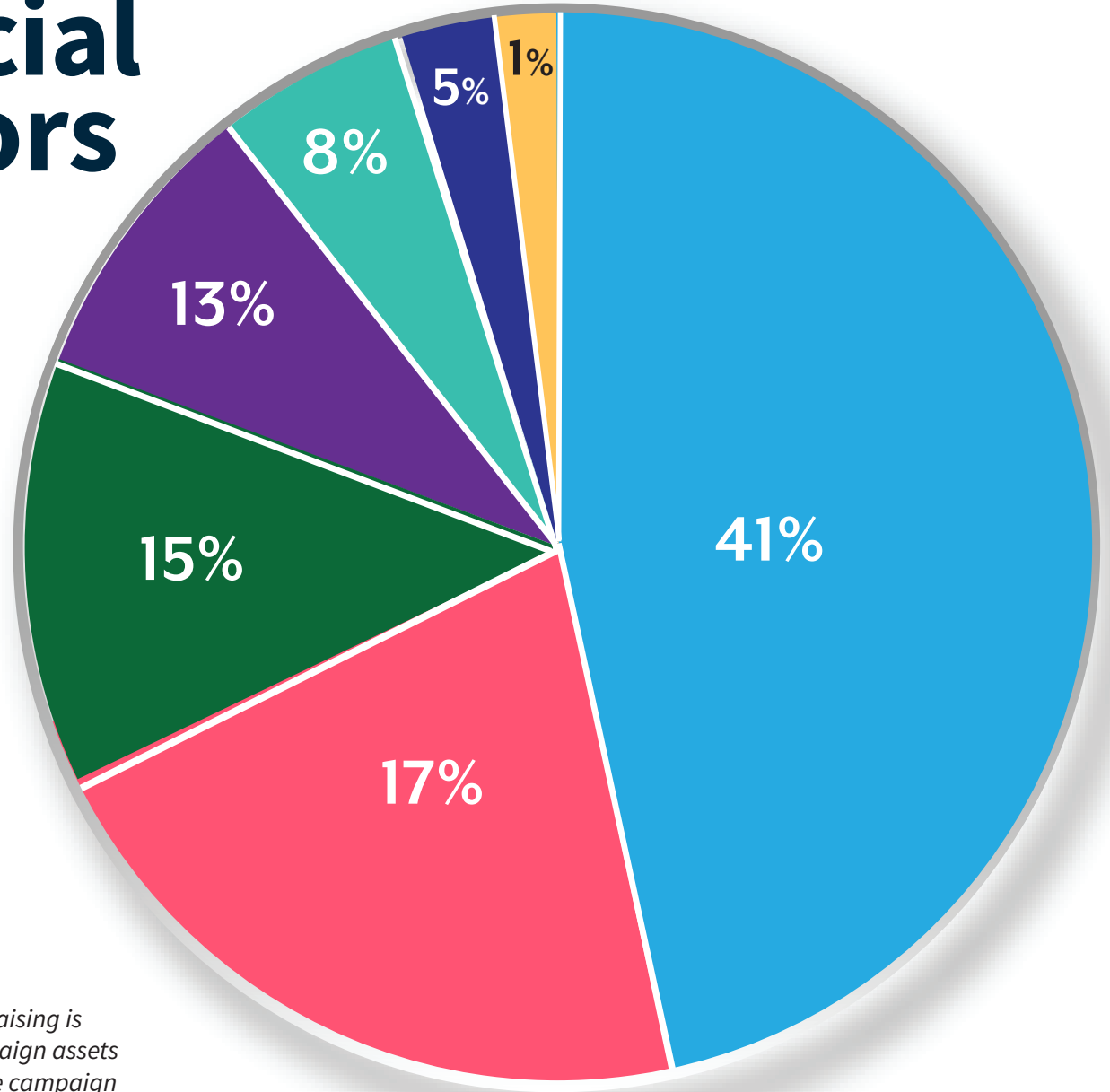


Our Cot Crew transported our emergency shelter cots each week, ensuring that our families had a safe and reliable place to sleep.



# Our Financial Contributors

- Government
- Religious Organizations
- Individuals
- Grants & Foundations
- Investments
- Event Fundraising
- Client Self Help



*Footnote - Capital Campaign HOMEBase fundraising is not included in this chart. As of 12/31/25, campaign assets in hand are 55% of the goal, and pledges to the campaign bring us to 71% of our HOMEBase goal.*

